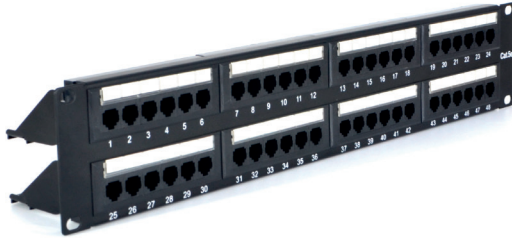


RL-PP4885E

 **RACKTEL**

Patchpanel 48 port cat. 5e



number of sockets: 48

category: 5e

mounting: four-point

includes mounting kit

RL-PP4885E

installation	2U x 19"
dimensions weight	approx 2kg
ports	48 Cat 5e ports

The patchpanel is used to organise and manage network cables in a data centre or telecommunications infrastructure. It is a patchpanel with a series of ports to which network cables are connected, allowing various network devices such as servers, switches and routers to be connected in an easy and organised manner. With the patchpanel, connections can be quickly changed and managed without having to directly connect and disconnect cables to devices, helping to keep things tidy and minimise the risk of cable damage.



www.racktel.pl

[otwórz](#)